

# COME ON BACK

A B

3X  
2 3 4 (fill)

Detailed description: This system contains two musical staves. The first staff, labeled 'A', shows a sequence of notes with fret numbers 2, 3, and 4. The second measure of 'A' is marked with a repeat sign and a slash. The second staff, labeled 'B', starts with a '3X' above it, followed by notes with fret numbers 2 and 3. The second measure of 'B' is marked with a repeat sign and a slash. The system concludes with two notes marked with accents (>).

A B

3X  
2 3 4 (fill)

Detailed description: This system is identical in notation to the first system, showing sections A and B with fret numbers and repeat signs.

Bridge...

Bell

2 3 4 3X (fill)

Detailed description: The bridge section consists of a single staff. It begins with a 'Bell' label above the first measure. The staff contains notes with fret numbers 2, 3, and 4. The second measure is marked with a repeat sign and a slash. The third measure is marked with a repeat sign and a slash. The fourth measure is marked with a repeat sign and a slash. The section ends with a double bar line and a '3X (fill)' label.

A

2 3 4

Detailed description: This system shows section A on a single staff. It includes notes with fret numbers 2, 3, and 4. The second and third measures are marked with repeat signs and slashes. The section concludes with two notes marked with accents (>).

# I KNOW WHAT YOU MEAN

Intro... A

7x

A B

7x 2 2

Gtr. Solo A

7x 7x 7x

A B

7x

2 2

2 2

# TURN IT UP

Intro...  
Chorus

7x

p

Breakdown...

2 3 4 (fill)

Chorus

7x

p

Verse

2 3 4 (fill)

4X

Bridge...

4X

Gtr. solo

7x 7x

p

Chorus

7x 7x

# TIME'S FLYIN'

Ride cym. 3rd and 4th time...

Musical staff with a treble clef and a 4/4 time signature. It begins with a quarter rest, followed by a quarter note G4, an eighth note A4, and an eighth note B4. This is followed by four groups of eighth-note triplets: G4-A4-B4, A4-B4-C5, B4-C5-D5, and C5-D5-E5. The final measure contains four groups of eighth-note triplets: G4-A4-B4, A4-B4-C5, B4-C5-D5, and C5-D5-E5, with an accent (>) over the first triplet.

A rhythmic staff with ten measures, numbered 2 through 10. Each measure contains a single eighth note followed by a quarter rest, with a slash and a percent sign (%) indicating a specific rhythmic pattern.

Improvise...

Musical staff with a treble clef and a 4/4 time signature. It features a sequence of eighth-note triplets: G4-A4-B4, A4-B4-C5, B4-C5-D5, C5-D5-E5, G4-A4-B4, A4-B4-C5, B4-C5-D5, C5-D5-E5, G4-A4-B4, A4-B4-C5, B4-C5-D5, C5-D5-E5. The final measure contains a quarter rest, followed by the instruction "5X (fill)".

Musical staff with a treble clef and a 4/4 time signature. It features a sequence of eighth-note triplets: G4-A4-B4, A4-B4-C5, B4-C5-D5, C5-D5-E5, G4-A4-B4, A4-B4-C5, B4-C5-D5, C5-D5-E5, G4-A4-B4, A4-B4-C5, B4-C5-D5, C5-D5-E5. The final measure contains a quarter rest, followed by the instruction "5X (fill)".

# THREEPEAT

Intro...



Musical notation for the Intro, starting in 3/4 time and changing to 4/4 time. It features a sequence of eighth notes and quarter notes with accents.

A



Musical notation for section A, featuring a sequence of eighth notes with accents and dynamic markings (2, 3).

B



Musical notation for section B, featuring a sequence of eighth notes with accents and dynamic markings (2, 3).

C



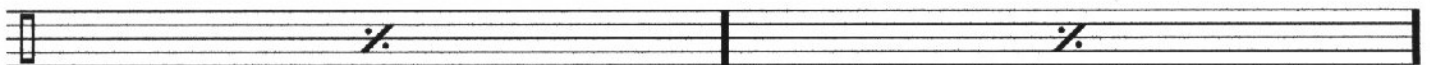
Musical notation for section C, featuring a sequence of eighth notes with accents.



Musical notation for section C, featuring a sequence of eighth notes with accents.

Solos over A 4X

Repeat A,B,C



Two empty musical staves with repeat signs, indicating solo sections over section A and a repeat of sections A, B, and C.

D.C al Coda



Musical notation for the Coda, starting with a Coda symbol and featuring a sequence of eighth notes with accents.

# I'M THE DIVA

Intro... 7X A 6X

The first staff of music begins with an 'Intro...' section consisting of four measures of eighth-note chords. This is followed by a measure labeled '7X' with a slash through the bar line, and then a four-measure section labeled 'A' featuring a guitar riff with circled notes and 'x' marks on the strings. The staff concludes with a measure labeled '6X' and a slash through the bar line.

B 6X Improvise fill

The second staff starts with a four-measure guitar riff labeled 'B' with circled notes and 'x' marks. This is followed by a measure labeled '6X' with a slash through the bar line, and finally a measure labeled 'Improvise fill' with a slash through the bar line.

A 7X A 6X

The third staff contains two measures of guitar riffs labeled 'A' with circled notes and 'x' marks. The first measure is followed by a measure labeled '7X' with a slash through the bar line, and the second measure is followed by a measure labeled '6X' with a slash through the bar line.

B 7X Improvise drum solo 8X

The fourth staff begins with a four-measure guitar riff labeled 'B' with circled notes and 'x' marks. This is followed by a measure labeled '7X' with a slash through the bar line, and then a measure labeled 'Improvise drum solo 8X' with a double bar line and repeat dots.

Bass solo 16X Synth solo 16X B 7X 3X

The fifth staff features a four-measure 'Bass solo 16X' section, followed by a four-measure 'Synth solo 16X' section, and then a four-measure guitar riff labeled 'B' with circled notes and 'x' marks. The staff ends with a measure labeled '7X' with a slash through the bar line, and a final measure labeled '3X' with a slash through the bar line.

# YOUR ADVANCES

Intro 2x  
Verse 4x

6X

Detailed description: This system contains a single staff of music in 4/4 time. It begins with an 'Intro 2x' section consisting of two measures of quarter notes (G4, A4, B4, C5). This is followed by a 'Verse 4x' section, which is a 16-measure sequence of eighth-note chords: G4-A4, A4-B4, B4-C5, C5-B4, B4-A4, A4-G4, G4-A4, A4-B4, B4-C5, C5-B4, B4-A4, A4-G4, G4-A4, A4-B4, B4-C5, C5-B4. The final measure of the verse is marked with an accent (>) and '6X'.

Chorus

6X

Improvise fill...

Detailed description: This system contains a single staff of music. It starts with a 'Chorus' section of four measures: G4 (quarter), A4 (quarter), B4 (quarter), C5 (quarter). This is followed by a 6-measure rest marked '6X'. The section concludes with an 'Improvise fill...' consisting of four measures of eighth-note chords: G4-A4, A4-B4, B4-C5, C5-B4.

Interlude 1x  
Verse 2x

3X

Detailed description: This system contains a single staff of music. It begins with an 'Interlude 1x' section of two measures of quarter notes (G4, A4, B4, C5). This is followed by a 'Verse 2x' section, which is an 8-measure sequence of eighth-note chords: G4-A4, A4-B4, B4-C5, C5-B4, B4-A4, A4-G4, G4-A4, A4-B4. The final measure of the verse is marked with an accent (>) and '3X'.

Chorus

6X

Improvise fill last x

Detailed description: This system contains a single staff of music. It starts with a 'Chorus' section of four measures: G4 (quarter), A4 (quarter), B4 (quarter), C5 (quarter). This is followed by a 6-measure rest marked '6X'. The section concludes with an 'Improvise fill last x' consisting of four measures of eighth-note chords: G4-A4, A4-B4, B4-C5, C5-B4.

16-bar Gtr. Solo over Verse

Choruses

6X

Improvise fill last x

Detailed description: This system contains a single staff of music. It begins with a 16-measure rest marked '16-bar Gtr. Solo over Verse'. This is followed by a 'Choruses' section of four measures: G4 (quarter), A4 (quarter), B4 (quarter), C5 (quarter). This is followed by a 6-measure rest marked '6X'. The section concludes with an 'Improvise fill last x' consisting of four measures of eighth-note chords: G4-A4, A4-B4, B4-C5, C5-B4.

Detailed description: This system contains a single staff of music. It consists of a 16-measure sequence of eighth-note chords: G4-A4, A4-B4, B4-C5, C5-B4, B4-A4, A4-G4, G4-A4, A4-B4, B4-C5, C5-B4, B4-A4, A4-G4, G4-A4, A4-B4, B4-C5, C5-B4. The final four measures are marked with accents (>).

# BATTLE OF PERGAMUM

Pick-up... Intro...

2 3 4 <sup>fill</sup> 5 6 7 8 <sup>fill</sup>

Vocal Rap...

2 3 4 5 6 7 8 <sup>fill</sup>

Keys...

2 3 4 5 6 7 8

Gtr...

14x

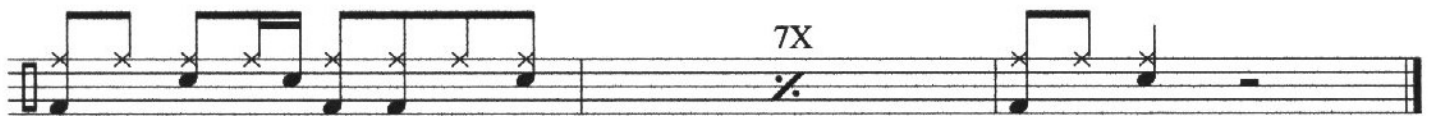
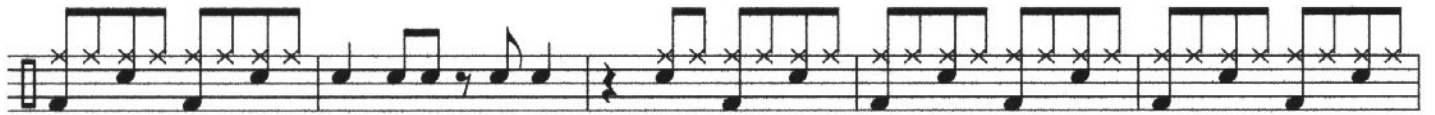
Vocal...

2 3

D.S. al fine fine



# STOP AND GO



# FROM THE TOP

Hip Hop/Shuffle Feel

Intro...

Musical staff for the first line of the Intro section. It features a 4/4 time signature and a key signature of one flat. The melody consists of eighth and sixteenth notes with various articulations like accents (>) and slurs (O). There are repeat signs with first and second endings labeled '2' and '3'.

Musical staff for the second line of the Intro section, continuing the melody from the first line with similar articulations and repeat signs.

Musical staff for the third line of the Intro section, concluding the introductory phrase.

Verse...

Chorus...

Musical staff for the Verse and Chorus sections. The Verse part is marked with '8x' and the Chorus part is also marked with '8x'. Both sections feature a rhythmic pattern of eighth notes with articulations.

Breakdown...

Musical staff for the Breakdown section, showing a more melodic and syncopated rhythmic pattern.

Verse...

Choruses...

Outro...

Musical staff for the Verse, Choruses, and Outro sections. The Verse and Choruses are each marked with '8x'. The Outro section concludes with a triplet of eighth notes and the instruction 'fade on groove...'.